



INCORPORATED COUNTY OF LOS ALAMOS

101 Camino Entrada, Building 3
Los Alamos, New Mexico 87544 (505) 663-3507
Procurement Division

December 10, 2024

TO ALL HOLDERS OF SOLICITATION DOCUMENTS FOR:

Invitation for Bids No. IFB25-27
IFB Name: Jemez Mountain Fire Protection Phase IV Project

Addendum No. 1

This Addendum No. 1 forms a part of the Solicitation Documents and modifies, as noted below, the original Solicitation Documents identified above. This Addendum as well as all documentation associated with it shall be made available at the following link:

<https://www.losalamosnm.us/Doing-Business/Procurement/Open-Solicitations>

The drawings can be found at the following link: <https://losalamosnm.egnyte.com/fl/UST68TGv8d>

This Addendum provides the following information as well as questions received and the County's answers to all potential Bidders. This addendum also includes Attachments A and B:

1. Attendance Sheet from the Pre-Bid Conference held on December 3, 2024, is attached for reference, Attachment A.
2. Unsuitable Excess Material Storage Map is attached for reference, Attachment B.
3. What is the Engineer's Estimate?

Answer: The Engineers Estimate is TWO MILLION FOUR HUNDRED TWENTY SIX THOUSAND EIGHT HUNDRED TWENTY-NINE DOLLARS AND 76/100 (\$2,426,829.76).

4. Please provide information on Site Grading/Excavation Material Disposal and Storage?

Answer: Two Sites are proposed for the disposal and storage of the excess grading/excavation material removed from the Tank Site that is under Item 15- SITE GRADING/EXCAVATION.

- a) Site 1- Proposed at the ski hill. The material to be stored there has to meet the maximum gradation requirements of 6" minus. Please see Attachment B Unsuitable Excess Material Storage map.
- b) Site 2- 132 DP Road across Fire Station 2 (Approximately seven (7) miles away (one-way) from project site.
- c) Contractor to coordinate with the Project Manager for each location the material is hauled to.

5. What are the Liquidated Damages for the project?

Answer: Liquidated Damages for this project are ONE THOUSAND DOLLARS AND NO/100 (\$1,000.00) per day.

6. Will Domestic Material be required for this Project?

Answer: No. Domestic material is not required

7. What Entity or Agency is Funding this Project?

Answer: This Project is funded solely by County Capital Improvement Project funds.

8. Sheet G-002 Water General Notes #8&9: Could you clarify stainless steel bolt requirements for mega lug-type and flanged fittings (304ss or 316ss) and provide spec reference?

Answer: 316 or 304 stainless are acceptable for bolt kits. Specification is per NMAPWA standard, section 801.9.4; for this project stainless steel is required, and high strength cast iron and high strength steel are not acceptable.

All other provisions of the Solicitation Documents shall remain unchanged. This Addendum No. 1 is hereby made a part of the Solicitation Documents to the same extent as those provisions contained in the original documents and all itemized listings thereof.

Each Bidder is requested to acknowledge receipt of this Addendum No. 1 with the Bid Forms.

I hereby acknowledge receipt of this Addendum No. 1.

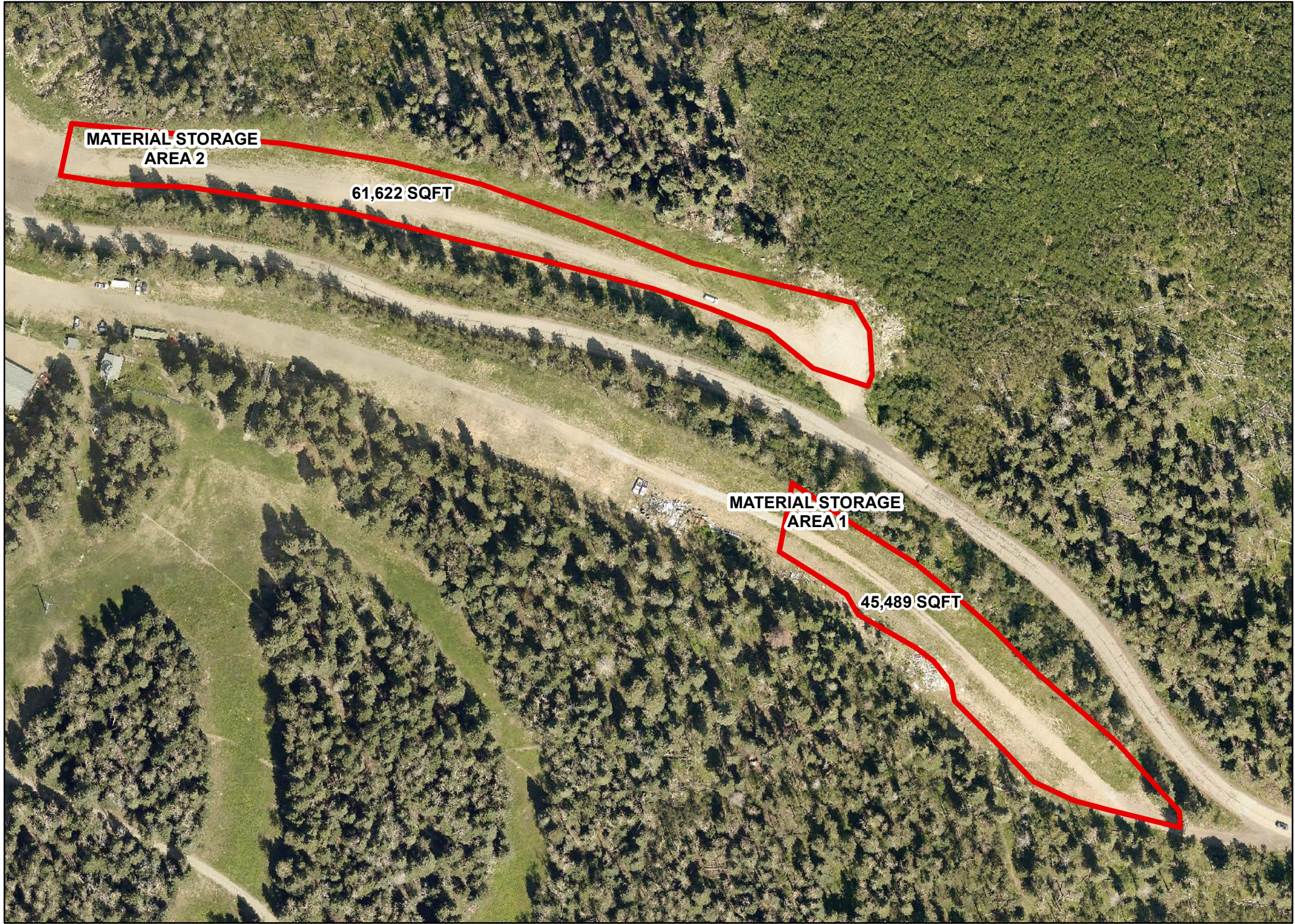
<hr/>		
Signed	Print Name	Date
<hr/>		
Title	Company	

Attachment B - Unsuitable Excess Material Storage Map



**UNSUITABLE EXCESS MATERIAL STORAGE
SITE MAP**





**MATERIAL STORAGE
AREA 2**

61,622 SQFT

**MATERIAL STORAGE
AREA 1**

45,489 SQFT

UNSUITABLE EXCESS MATERIAL STORAGE MAP

