

A circular wreath of various botanical illustrations, including ferns, leaves, and flowers in shades of green, red, orange, and purple, framing a central white circle.

Sustainable Landscape Design

Maintenance



BE BOLD. Shape the Future.[™]
College of Agricultural, Consumer
and Environmental Sciences
Extension Master Gardener

LOS ALAMOS
Department of Public Utilities
Conservation



Maintenance

What could possibly go wrong?

- You've made your plan, modified your space.
- You've selected plants and planted them.
- Now what?





Watering

- Can't coast, pay attention - even if it is an automatic system!
- Watch for signs of insufficient water
- Look for line breaks and clogged emitters
- Follow the temperatures and disconnect water before it freezes!





Maintenance



CoCoRaHs

- Huh?
- Community Collaborative Rain, Hail & Snow network
- Begun by CSU and Colorado Master Gardeners
- Anyone can join! Now nationwide!
- www.cocorahs.org
- <https://weatheryourway.com/collections/cocorahs-gauge-parts>





Fall Maintenance

- Mulch - free and otherwise
- Look for thinning soil - add soil, compost, leaves as needed
- DON'T cleanup!
- Access infrastructure
- Can start to address that large, weedy area
 - **Goats!**
 - Amendments
 - Cover the ground - green manure, mulch
 - Pace yourself!





Winter Maintenance

- Pruning
 - Timing is dependent on the plant, bloom time, why pruning?
 - Usually done by March
- Monitor precipitation
 - WATER as necessary
 - If dry, schedule on the holidays
- Start seedlings





Maintenance



BE BOLD. Shape the Future.[®]
College of Agricultural, Consumer
and Environmental Sciences
Extension Master Gardener

LOS ALAMOS
Department of Public Utilities
Conservation

Maintenance



Spring Maintenance

- Clean-up
 - Cut back perennials when you see new growth
 - Remove winter mulch (as needed)
- Amend and fertilize
- Divide perennials
- Start planting seeds (esp. cool season vegetables)





Summer Maintenance

- Weed and deadhead
- Water
- That large, weedy area
 - Goats!
 - Solarization
 - www.dyckarboretum.org





Common (and not so common) Mistakes

- Plant selection - we love what we love
 - Unsuitable for climate
 - Trusting microclimates over time
 - Has your climate changed since your go-to reference was written
 - Is your plant thriving now?







Common (and not so common) Mistakes

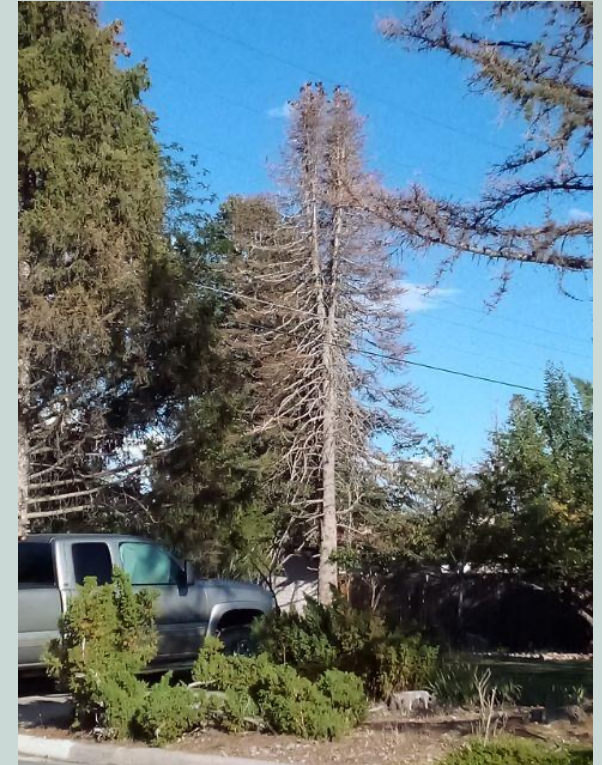
- Plant mis-siting
 - "This plant will never get that big"
 - "Didn't we used to have a view of the mountains?"
 - "That tree will never reach the powerlines"
 - Story of Barranca Mesa





Maintenance







Common (and not so common) Mistakes

- Trusting 'expert' input/opinions
 - Seek local, experienced people for advice
 - Nursery, vendors
 - Get a second opinion
 - Thoughts on NM Forestry Division distributions





Critters and other Natural Problems

- Deer, mice, ground squirrels, rabbits, bears, gophers, lots of insects, etc.
 - We share the area with them
 - Wholesale removal is not a viable option
 - Get creative with fencing, netting, biocontrol
- Drought and fire
 - See the Fire Defensible Space reference from Week 1





Mindfulness is not just for Yogis

- Get acquainted with everything in your yard and garden
 - Over the seasons
 - Takes time
 - Engage all senses
 - Write it down!
- Possible tools to use - Citizen Science Project
- Your garden is a living, breathing thing!







What's Next

Enjoy!





Resources

- <http://www.lamgonline.org/>
 - Information about areas and plants in the Demonstration Garden
 - Maintained by the Los Alamos Master Gardener volunteers
- https://pubs.nmsu.edu/_h/index.html
 - Collection of horticulture publications curated by NMSU Extension professionals
 - Includes plant and varietal recommendations for entire state
- <http://www.cocorahs.org>
- <http://www.dyckarboretum.org>
- Linda Chalker-Scott, 2015. *How Plants Work: The Science Behind the Amazing Things Plants Do*. Timber Press, Portland Oregon.
 - No matter how deep your horticulture knowledge is, this is informative, detailed, and very readable.
- Dirr, Dr. Michael A. 2011. *Dirr's Encyclopedia of Trees & Shrubs*. Timber Press, Portland Oregon.
 - A true encyclopedia, heavy and packed with photos. Save up your pennies for this one; it's worth it!
- Reich, Dr. Lee. 1997. *The Pruning Book*. Taunton Press, Newtown Connecticut.
 - This book may be hard to find due to its age, but a good, proper pruning job is timeless! Clear illustrations.
- Taiz, L., and E. Zeiger. 2010. *Plant Physiology. 5th edition*. Sinauer Associates, Sunderland, Massachusetts.
 - For those looking for the deeply scientific end of horticultural literature. Information about plant physiology keeps growing, and by the time you finish reading this, the 6th edition may be available...college textbook level

Maintenance



BE BOLD. Shape the Future.[™]
College of Agricultural, Consumer
and Environmental Sciences
Extension Master Gardener

LOS ALAMOS
Department of Public Utilities
Conservation



Thank you

Barb Mann, LAMG

lamgonline.org

losalamos@nmsu.edu



BE BOLD. Shape the Future.[™]
College of Agricultural, Consumer
and Environmental Sciences
Extension Master Gardener

LOS ALAMOS
Department of Public Utilities
Conservation



2024 Extension Master Gardener Training: Jan. 15 – Apr. 21
Cost is \$200 and you will need to register by calling Extension Office at 505-662-2656

If you would kindly respond to the **survey** you'll be receiving from Extension about this program, it would be most appreciated.

The **Extension Office** and the **Los Alamos Master Gardeners** are both excellent resources for all your plant and landscape needs. Please access their knowledge!

Los Alamos DPU is here for all your water (and energy) conservation questions.

Recordings and presentations can be found at
LADPU.COM/SUSTAINABLE-LANDSCAPING

