

# Los Alamos County Budget in Brief

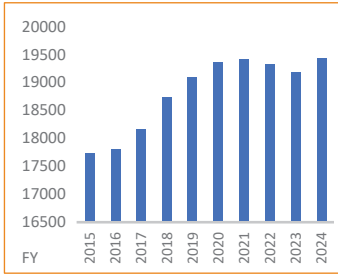
## FY 2026 Adopted Budget

Population: 19,444

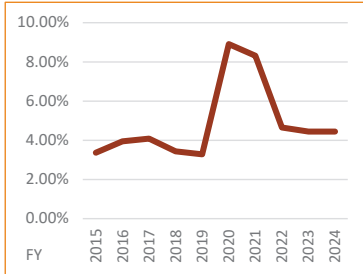
Unemployment Rate: 4.5%

Per Capita Personal Income:  
\$86,598

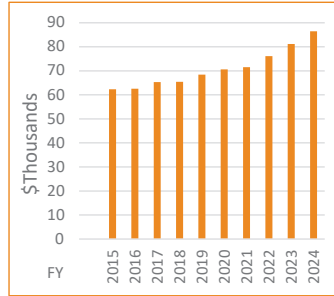
Total Assessed Value of Taxable  
Property: \$1,053,455,460



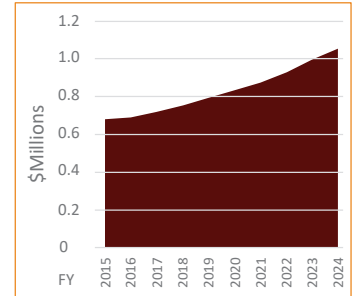
Source: US Census data



Source: New Mexico Department of Workforce Solutions Economic Research and Analysis report



Source: Personal Income data is from NM Dept. Of Workforce Solutions



Source: New Mexico State Property Tax Division

Los Alamos County is 109 sq mi

Median Home Sales Price in FY 2024: \$610,000

## What the County Government Provided in FY 2024

- ✓ 86 Miles of Streets Maintained
- ✓ 6,175 Park Acres Maintained
- ✓ 25,149 Police Call Responses
- ✓ 371,183 Library Circulations
- ✓ 2,550 Fire Protection Service Responses
- ✓ 777 Construction Permits Issued
- ✓ 554 Seniors Served at Senior Centers
- ✓ 70,947 Aquatic Center Visits
- ✓ 56,864 Ice Rink Visits
- ✓ 19,653 Rounds of Golf
- ✓ 279,766 Transit Passenger Rides

## How your Gross Receipts Tax is distributed

### Gross Receipts Tax Distribution

State	4.8750 %
Municipal	1.4375 %
County	0.6250 %
Regional Transit	0.1250 %
<b>Total</b>	<b>7.0625 %</b>

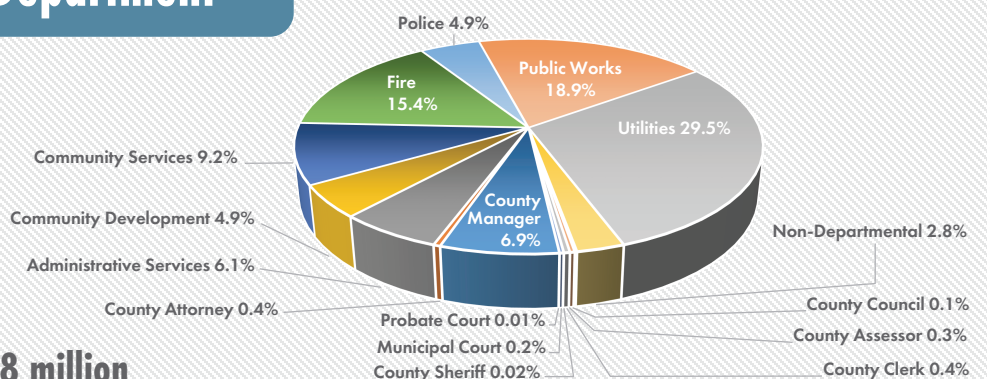
## Where does your Property Tax dollar go?

### Property Tax Distribution

LA Public School	\$0.47
LA County	\$0.39
UNM-LA	\$0.07
State of New Mexico	\$0.05
Mirador Public Improvement District	\$0.01
Property Tax Admin Fee	\$0.01
<b>Total</b>	<b>\$1.00</b>

## FY 2026 Total Adopted Budgeted Expenditures by County Department

**Total Adopted Budget \$367.98 million**



### Explanation

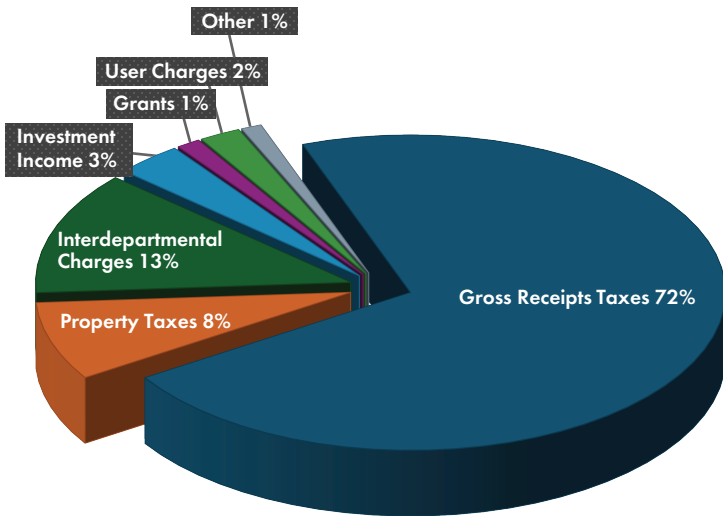
The adopted Fiscal Year 2026 budget totals \$367.9 million, representing a \$9.6 million reduction from the Fiscal Year 2025 budget of \$377.5 million. This decrease is largely attributable to a \$37 million decline in capital project funding. However, several areas experienced funding increases,

including \$6.6 million in the General Fund, \$6.5 million in Special Revenue Funds, \$5.2 million in Debt Service, \$8.0 million in the Joint Utility System Fund, and \$2.8 million in Internal Services Funds. The Other Enterprise Fund decreased by \$1.7 million.

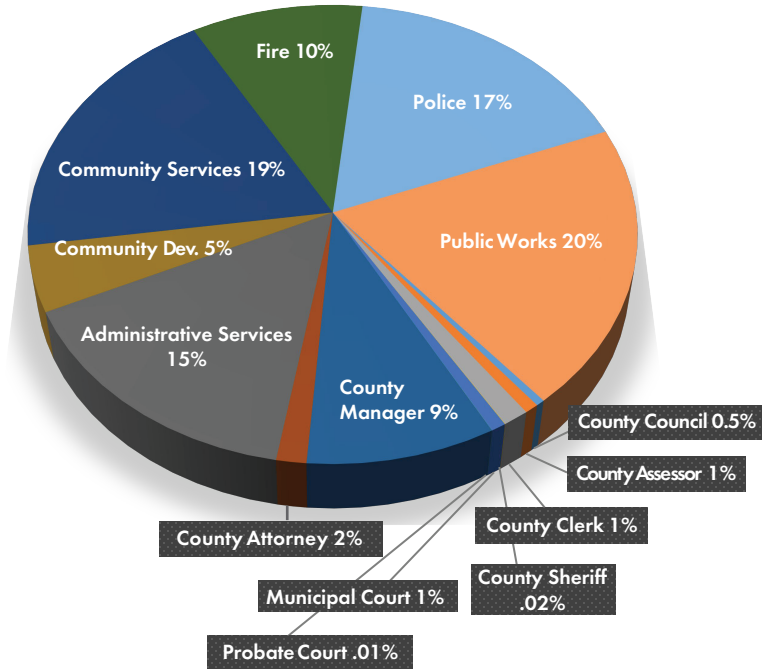
# Los Alamos County Budget in Brief

## FY 2026 Adopted Budget

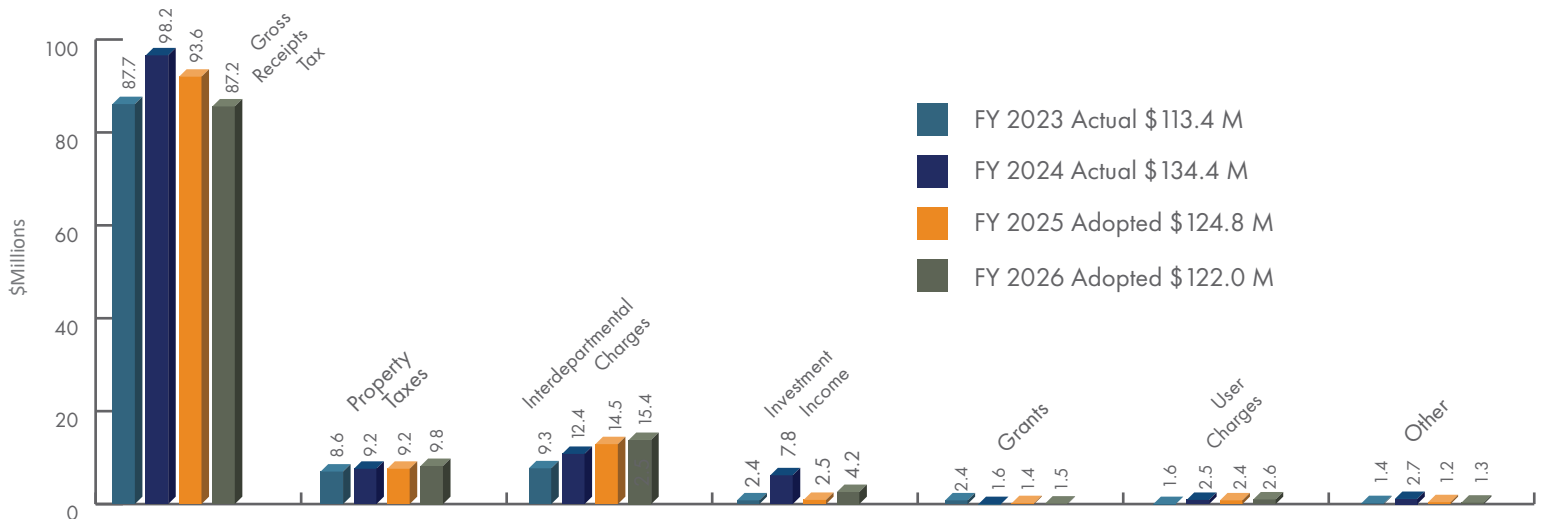
**General Fund Budgeted Revenues**  
Total \$122 Million



**General Fund Budgeted Expenditures**  
Total \$103 Million



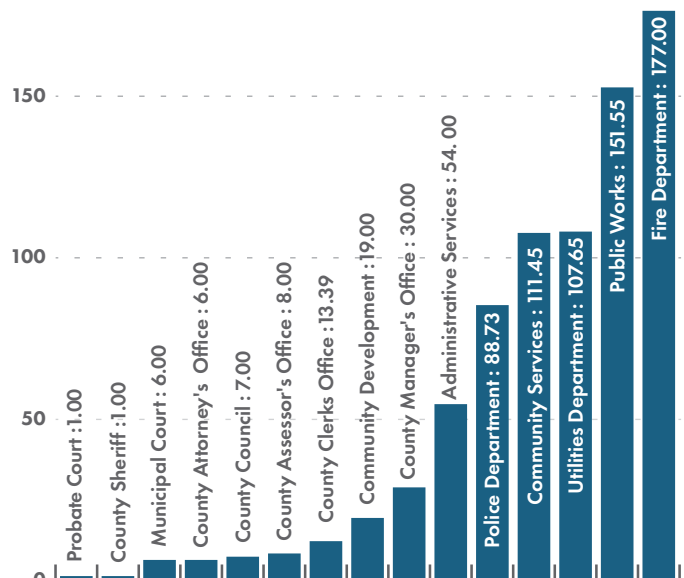
### General Fund 4-Year Revenue Comparison by Category



### Capital Improvements (CIP) FY 2026 Adopted Budget

GOVERNMENTAL CIP FUNDS	CIP Fund	Other Revenue Source
<b>Ongoing Infrastructure Capital &amp; Maintenance</b>		
Public Works Dept.	\$ 10,292,000	
PW Road Reconstruction Projects	\$ 12,700,000	\$ 1,000,000
PW Major Facilities Maintenance		\$ 3,328,466
PW Sustainability Enhancements	\$ 1,000,000	
Community Development Dept./ Economic Dev.		\$ 10,148,750
Community Services Dept. Projects	\$ 7,900,000	
CSD Small Capital and Maintenance	\$ 571,650	
Administrative Services/ Information Management	\$ 6,579,114	
Cost Increase for all Categories	\$ 870,300	
<b>Total</b>	<b>\$ 39,913,064</b>	<b>\$ 14,477,216</b>
ENTERPRISE CIP FUNDS	Joint Utilities System Fund	
<b>Department of Public Utilities</b>		
Electric Production		\$780,000
Electric Distribution		\$2,075,000
Gas Distribution		\$475,000
Water Distribution		\$3,800,000
Water Production		\$4,458,500
Wastewater		\$2,695,000
<b>Total</b>		<b>\$14,283,500</b>

### Adopted FY 2026 Full-Time Equivalent (FTE) Total 781.8



Visit our Reports and Budget webpage  
[lacnm.com/budget](http://lacnm.com/budget)

